

# LIVE AND LET DIE

Duration – ca. 3:05

Words and Music by  
PAUL McCARTNEY and LINDA McCARTNEY  
Arranged by PAUL MURTHA

Pop Ballad (♩ = 60)

Flute/Piccolo  
(-Picc.) *mf*

Oboe  
*Solo mp*

Bassoon  
*mp*

B♭ Clarinet 1  
*mp a2*

B♭ Clarinet 2, 3  
*mp*

E♭ Alto Clarinet  
*mp*

B♭ Bass Clarinet  
*mp*

E♭ Alto Sax. 1, 2

B♭ Tenor Sax.

E♭ Bari. Sax.  
Bsn.  
*mp*

B♭ Trumpet 1  
*Ob. St. Mute One player mp*

B♭ Trumpet 2, 3

F Horn 1, 2

Trombone 1, 2

Baritone

Electric Bass  
Tuba  
(-Tuba) *mp*

Percussion 1

Percussion 2

Mallet Perc.

Timpani

1 2 3 4



9  (♩ = 120)

Fl./Picc. (♩ = ♩) +Picc. f

Ob. f

Bsn. f

Cl. 1 f

Cl. 2, 3 f

A. Cl. f

Bs. Cl. f

A. Sv. 1, 2 mf a2 f

T. Sv. mf Play f

B. Sv. f

9  (♩ = 120)

Tpt. 1 All Open Play mf a2

Tpt. 2, 3 mf f

Horn 1, 2 mf a2 f

Tbn. 1, 2 f

Bar. mf +Tuba f

Tuba

Perc. 1 Drum Set Ride Cym. mf B.D. f Low Tom +S.D.

Perc. 2

Mlt. Perc. Bells mp

Timp. f

5 6 7 8 9 10

**16** **Faster** (♩ = 144)

[illegible]

To Coda 

FL./Picc.

Ob.

Bsn.

Cl. 1

Cl. 2, 3

A. Cl.

Bs. Cl.

A. Sx. 1, 2

T. Sx.

B. Sx.

Tpt. 1

Tpt. 2, 3

Horn 1, 2

Thn. 1, 2

Bar.

Tuba

Perc. 1

Perc. 2

Mllt. Perc.

Timp.

17 *sf* *ffz*

18 *sf* *ffz*

19

20 *sf* *ffz*

21 *sf* *ffz*

22 *sf* *ffz*

*2. opt. 8vb sfz*

*2. opt. 8vb sfz*

*a2*

*To Coda* 



24

FL/Picc. (-Picc.) *mf*

Ob. *mf*

Bsn.

Cl. 1 *mf*

Cl. 2, 3 *mf*

A. Cl.

Bs. Cl.

A. Sx. 1, 2

T. Sx. *f*

B. Sx.

24

Tpt. 1

Tpt. 2, 3

Horn 1, 2

Tbn. 1, 2 *f*

Bar. *f*

Tuba

Perc. 1

Perc. 2 *f* Concert Toms

Milt. Perc.

Timp.

23 24 25 26

Fl. div. + Picc on top

Fl./Picc.

Ob.

Bsn.

Cl. 1

Cl. 2, 3

A. Cl.

Bs. Cl.

A. Sx. 1, 2

T. Sx.

B. Sx.

Tpt. 1

Tpt. 2, 3

Horn 1, 2

Tbn. 1, 2

Bar.

Tuba

Perc. 1

Perc. 2

Mllt. Perc.

Timp.

Tam-Tam

27

28

29

30

31

04004134

Live and Let Die - 6



38 Reggae

Fl./Picc. *Fl. div.* *mf* (-Picc.)

Ob.

Bsn. *mf*

Cl. 1 *mf*

Cl. 2, 3 *mf* *a2*

A. Cl. *mf*

Bs. Cl. *mf*

A. Sx. 1, 2 *f* *1. Solo* *End Solo*

T. Sx. *mf*

B. Sx. *mf*

38 Reggae

Tpt. 1

Tpt. 2, 3 *mf* *a2*

Horn 1, 2 *mf* *a2*

Tbn. 1, 2

Bar. *mf*

Tuba *mf* *H.H.*

Perc. 1 *Congas*

Perc. 2 *mf* *Xylo.*

Milt. Perc. *mf*

Timp.



04004134  
Live and Let Die - 9

47

Fl./Picc. *fp*

Ob.

Bsn. *fp* *f*

Cl. 1 *fp*

Cl. 2, 3 *fp*

A. Cl. *fp* *sfz*

Bs. Cl. *fp* *f*

A. Sv. 1, 2 *fp*

T. Sv. *fp*

B. Sv. *fp* *f*

Tpt. 1 *fp* *f*

Tpt. 2, 3 *fp* *f* *a2*

Horn 1, 2 *fp* *f*

Tbn. 1, 2 *mf* *fp* *2. opt. 8vb sfz*

Bar. *fp* *sfz*

Tuba *fp* *f*

Perc. 1 *Tambourine*

Perc. 2 *f* *Timp.*

Milt. Perc. *f*

Timp. *f*

44 45 46 47 48 49

*sfz* *sfz* *sfz*



55 Tempo I, Pop Ballad (♩ = 60)

FL/Picc. *mf* (-Picc.)

Ob. *mf*

Bsn. *mf*

Cl. 1 *mf* *a2*

Cl. 2, 3 *mf*

A. Cl. *mf*

Bs. Cl. *mf*

A. Sx. 1, 2 *mf*

T. Sx. *mf*

B. Sx. *mf*

55 Tempo I, Pop Ballad (♩ = 60)

Tpt. 1 *Solo* *mf*

Tpt. 2, 3

Horn 1, 2 *mf* *mp*

Tbn. 1, 2 *mp*

Bar. *mp*

Tuba *mp*

Perc. 1 *mf* S.D. on Rim

Perc. 2

Milt. Perc.

Timp. *Sus. Cym.*

55 56 57 58 *mp* 59





# LIVE AND LET DIE

PICCOLO

Words and Music by  
PAUL McCARTNEY and LINDA McCARTNEY  
Arranged by PAUL MURTHA

Pop Ballad

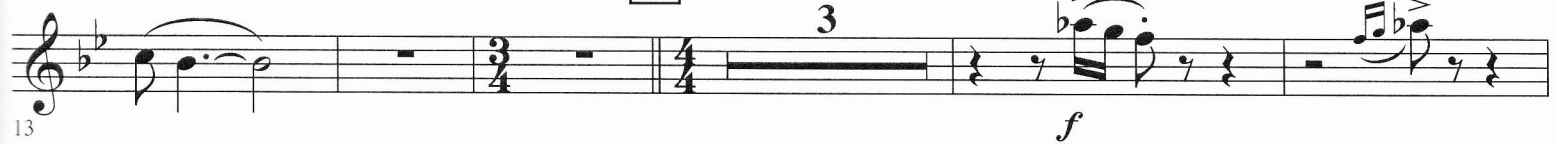
[9] %

(♩ = ♩)



[16] Faster

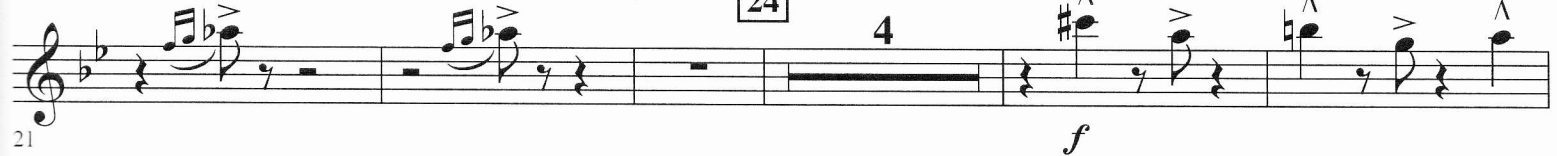
3



To Coda ⊕

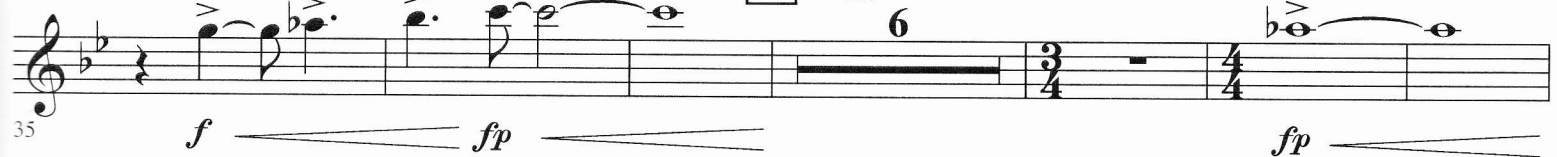
[24]

4



[38] Reggae

6



[47]

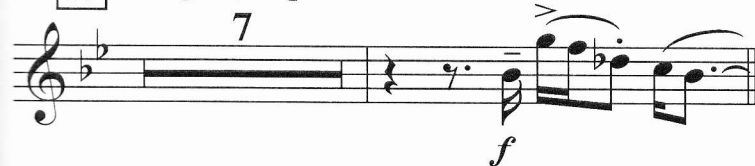
3



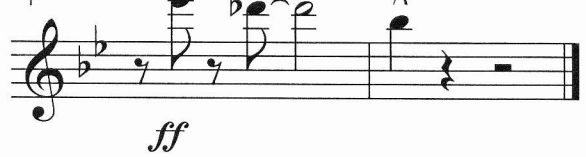
[55] Tempo I, Pop Ballad

D.S. al Coda

7



⊕ Coda



# LIVE AND LET DIE

## FLUTE

Words and Music by  
PAUL McCARTNEY and LINDA McCARTNEY  
*Arranged by PAUL MURTHA*

## Pop Ballad

**1** *mf*

**6** *f* **9**  $\text{J} = \text{J}$  **2**

**13** **16** *Faster* **3** *f* **To Coda**  $\text{Coda symbol}$

**23** **24** *mf* **2** *f* *div.*  $\text{div. symbol}$

**30** **38** *Reggae* *div.* *mf* *f* *fp*

**37** **47** **3** *fp* *f*

**44** **55** *Tempo I, Pop Ballad* *mf*

**59** *f* **D.S. al Coda** **Coda** *ff*

© 1973 (Renewed) PAUL and LINDA McCARTNEY and UNITED ARTISTS MUSIC LTD.  
This arrangement © 2015 PAUL and LINDA McCARTNEY and UNITED ARTISTS MUSIC LTD.  
All Rights for UNITED ARTISTS MUSIC LTD. Assigned to and Controlled by EMI UNART CATALOG INC.  
Exclusive Print Rights for EMI UNART CATALOG INC. Controlled and Administered by ALFRED MUSIC  
All Rights Reserved Used by Permission

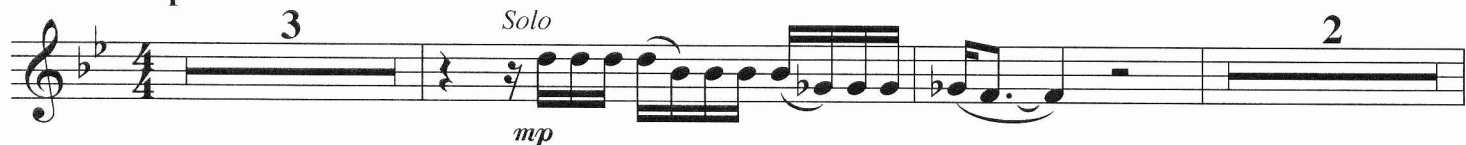
04004133  
Live and Let Die

# LIVE AND LET DIE

OBOE

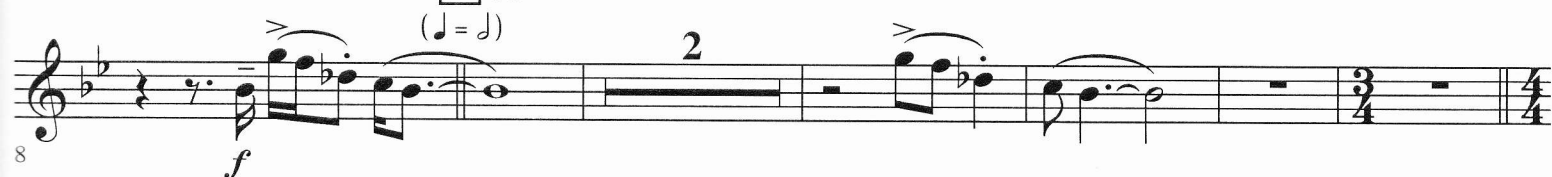
Words and Music by  
PAUL McCARTNEY and LINDA McCARTNEY  
Arranged by PAUL MURTHA

## Pop Ballad



9 %

(♩ = ♩)

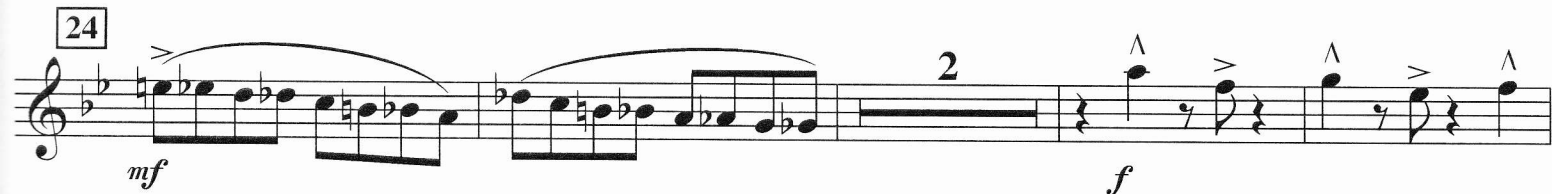


16 Faster

To Coda ⊕



24



38 Reggae

47

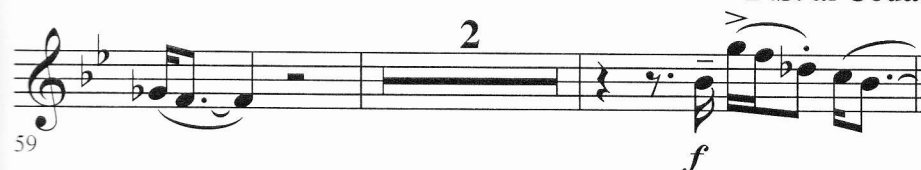


55 Tempo I, Pop Ballad



D.S. al Coda

⊕ Coda



# LIVE AND LET DIE

BASSOON

Words and Music by  
PAUL McCARTNEY and LINDA McCARTNEY  
Arranged by PAUL MURTHA

## Pop Ballad



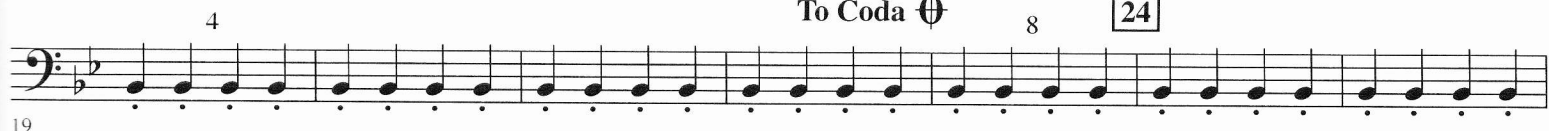
[9] %

[16] Faster

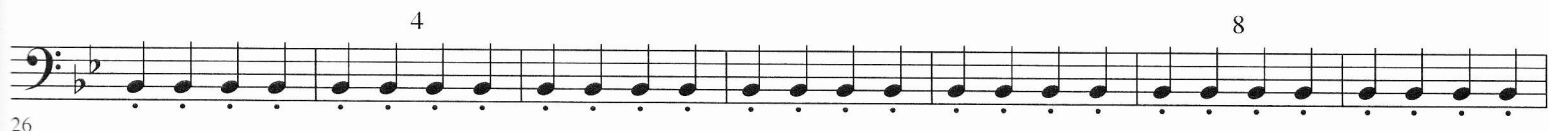


To Coda ⊕

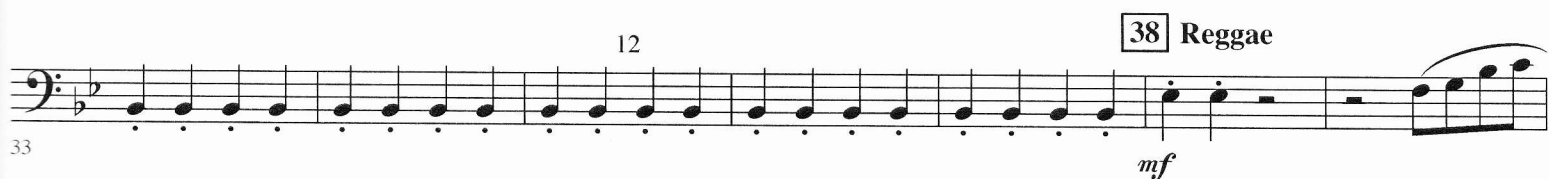
[24]



19



26



33



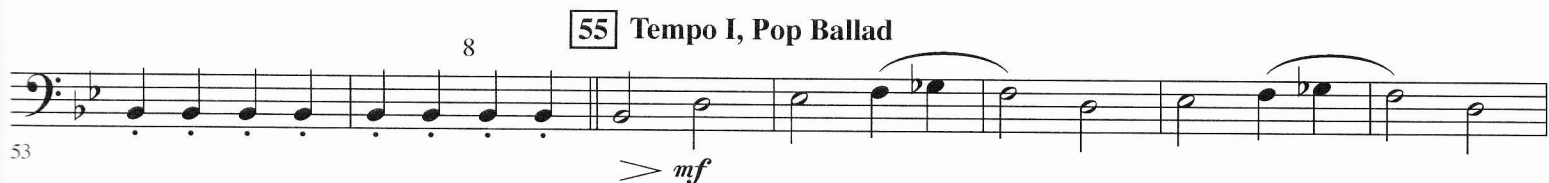
40

[47]

4



47



53

D.S. al Coda

⊕ Coda



60





# LIVE AND LET DIE

B $\flat$  CLARINET 1

Words and Music by  
PAUL McCARTNEY and LINDA McCARTNEY  
Arranged by PAUL MURTHA

## Pop Ballad

The musical score for B $\flat$  Clarinet 1 is written in treble clef. It begins with a 4/4 time signature and a *mp* dynamic. The first staff contains measures 1 through 8. Measure 9 is marked with a box containing the number 9 and a repeat sign. The tempo changes to 3/4 for measures 16 through 23, marked 'Faster' and *f*. Measure 24 is marked with a box containing the number 24 and *mf*. The tempo returns to 4/4 for measures 28 through 35, with dynamics *mp*, *mf*, *f*, and *f* respectively. Measures 36 through 43 are in 3/4 time, marked 'Reggae' and *fp*. Measure 44 is marked with a box containing the number 47 and *f*. Measures 53 through 60 are in 4/4 time, marked 'Tempo I, Pop Ballad' and *mf*. The score concludes with a 'D.S. al Coda' section (measures 60-61) marked *f*, and a 'Coda' section (measures 62-63) marked *ff*.

7 *mp*

9  $\%$  (J = J)

16 Faster 3 *f*

24 *mf*

28 *mp* *mf* *f* *f*

36 *fp* *mf* 2

44 *fp* 3 *f*

55 Tempo I, Pop Ballad *mf*

60 *f* D.S. al Coda

62 *ff* Coda

© 1973 (Renewed) PAUL and LINDA McCARTNEY and UNITED ARTISTS MUSIC LTD.

This arrangement © 2015 PAUL and LINDA McCARTNEY and UNITED ARTISTS MUSIC LTD.

All Rights for UNITED ARTISTS MUSIC LTD. Assigned to and Controlled by EMI UNART CATALOG INC.

Exclusive Print Rights for EMI UNART CATALOG INC. Controlled and Administered by ALFRED MUSIC

All Rights Reserved Used by Permission

# LIVE AND LET DIE

B $\flat$  CLARINET 2

Words and Music by  
PAUL McCARTNEY and LINDA McCARTNEY  
Arranged by PAUL MURTHA

## Pop Ballad

The musical score for B $\flat$  Clarinet 2 is written in treble clef. It begins with a 4/4 time signature and a *mp* dynamic. The first staff contains measures 1 through 5. Measure 6 is marked with a box containing the number 9 and a repeat sign, with a tempo change to *f* and a note value of  $(\text{half note} = \text{half note})$ . The second staff contains measures 6 through 14. Measure 15 is marked with a box containing the number 16 and the tempo change to *Faster*. The third staff contains measures 15 through 23. Measure 24 is marked with a box containing the number 24 and a tempo change to *mf*. The fourth staff contains measures 24 through 28. Measure 29 is marked with a box containing the number 29 and a tempo change to *f*. The fifth staff contains measures 29 through 36. Measure 37 is marked with a box containing the number 38 and the tempo change to *Reggae*. The sixth staff contains measures 37 through 43. Measure 44 is marked with a box containing the number 47 and a tempo change to *fp*. The seventh staff contains measures 44 through 53. Measure 54 is marked with a box containing the number 55 and the tempo change to *Tempo I, Pop Ballad*. The eighth staff contains measures 54 through 59. Measure 60 is marked with a box containing the number 60 and a tempo change to *f*. The ninth staff contains measures 60 through 64. Measure 65 is marked with a box containing the number 65 and a tempo change to *ff*. The tenth staff contains measures 65 through 68. The score concludes with a Coda symbol and a final measure.

*mp*

9 %  
(half note = half note)

2

16 *Faster*

3

*f*

To Coda  $\oplus$

24

*mf*

29

*mf* *f* *f* *fp*

38 *Reggae*

37

*mf*

47

3

*fp* *f*

55 *Tempo I, Pop Ballad*

*mf*

D.S. al Coda

*f*

$\oplus$  Coda

*ff*

© 1973 (Renewed) PAUL and LINDA McCARTNEY and UNITED ARTISTS MUSIC LTD.

This arrangement © 2015 PAUL and LINDA McCARTNEY and UNITED ARTISTS MUSIC LTD.

All Rights for UNITED ARTISTS MUSIC LTD. Assigned to and Controlled by EMI UNART CATALOG INC.

Exclusive Print Rights for EMI UNART CATALOG INC. Controlled and Administered by ALFRED MUSIC

All Rights Reserved Used by Permission

# LIVE AND LET DIE

B $\flat$  CLARINET 3

Words and Music by  
PAUL McCARTNEY and LINDA McCARTNEY  
Arranged by PAUL MURTHA

## Pop Ballad

The musical score for B $\flat$  Clarinet 3 is written in treble clef. It begins with a 4/4 time signature and a *mp* dynamic. The first staff contains measures 1 through 5. Measure 6 starts a new section with a 3/4 time signature, marked with a *f* dynamic and a repeat sign. Measure 9 contains a key signature change to one flat (B $\flat$ ) and a 2/4 time signature. Measure 16 is marked 'Faster' and '3', indicating a 3/4 time signature. Measure 24 is marked 'mf'. Measure 29 is marked 'mf' and 'f'. Measure 38 is marked 'Reggae' and 'mf'. Measure 47 is marked '3' and 'f'. Measure 55 is marked 'Tempo I, Pop Ballad' and 'mf'. Measure 60 is marked 'D.S. al Coda' and 'f'. The score concludes with a Coda section marked 'ff'.

6 *mp*

9  $\%$   
(J = J) 2

16 Faster 3 To Coda  $\oplus$

24 *mf*

29 *mf* *f* *f* *fp*

38 Reggae *mf*

47 3 *f*

55 Tempo I, Pop Ballad *mf*

60 D.S. al Coda *f*  $\oplus$  Coda *ff*

© 1973 (Renewed) PAUL and LINDA McCARTNEY and UNITED ARTISTS MUSIC LTD.

This arrangement © 2015 PAUL and LINDA McCARTNEY and UNITED ARTISTS MUSIC LTD.

All Rights for UNITED ARTISTS MUSIC LTD. Assigned to and Controlled by EMI UNART CATALOG INC.

Exclusive Print Rights for EMI UNART CATALOG INC. Controlled and Administered by ALFRED MUSIC

All Rights Reserved Used by Permission

# LIVE AND LET DIE

E $\flat$  ALTO CLARINET

Words and Music by  
PAUL McCARTNEY and LINDA McCARTNEY  
Arranged by PAUL MURTHA

## Pop Ballad



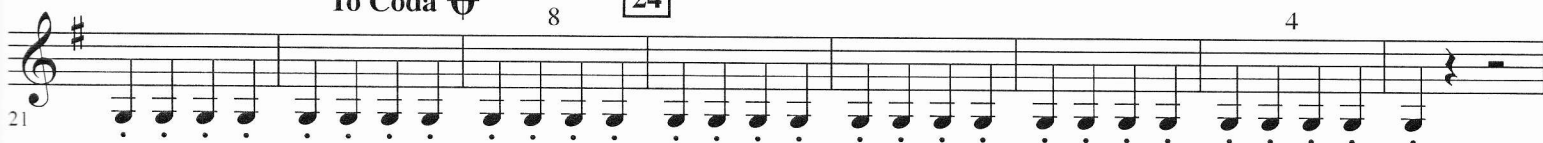
[9]  $\%$   
(J = J)



## [16] Faster



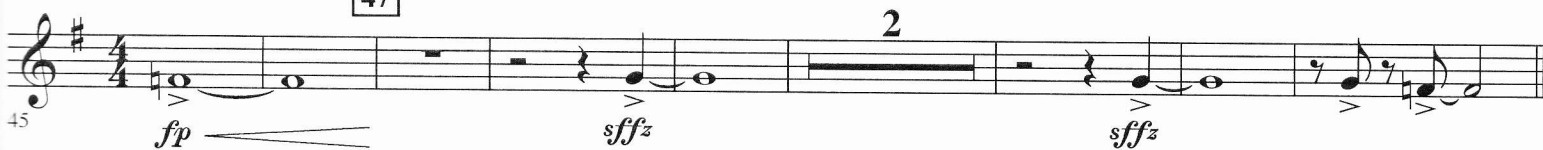
## To Coda $\Phi$



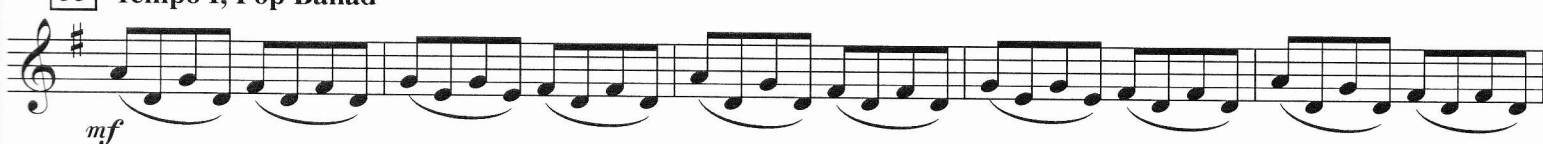
## [38] Reggae



[47]



## [55] Tempo I, Pop Ballad



## D.S. al Coda



## $\Phi$ Coda





# LIVE AND LET DIE

**B $\flat$  BASS CLARINET**

Words and Music by  
PAUL McCARTNEY and LINDA McCARTNEY  
*Arranged by PAUL MURTHA*

## Pop Ballad

Musical score for "The Sound of Silence" by Simon & Garfunkel. The score is written for piano and guitar, featuring various musical notations and dynamics.

**Measure 1:** Piano introduction with a melody in the right hand and a bass line in the left hand. Dynamics: *mp*.

**Measure 9:** Section marker [9] with a repeat sign. Dynamics: *f*.

**Measure 16:** Section marker [16] with the instruction "Faster". Dynamics: *f*.

**Measure 24:** Section marker [24]. Dynamics: *f*.

**Measure 38:** Section marker [38] with the instruction "Reggae". Dynamics: *mf*.

**Measure 47:** Section marker [47]. Dynamics: *fp* (fortissimo piano) and *f* (fortissimo).

**Measure 55:** Section marker [55] with the instruction "Tempo I, Pop Ballad". Dynamics: *mf*.

**Measure 60:** Section marker [60] with the instruction "D.S. al Coda". Dynamics: *ff* (fortissimo).

**Coda:** The piece concludes with a Coda section.

© 1973 (Renewed) PAUL and LINDA McCARTNEY and UNITED ARTISTS MUSIC LTD.  
This arrangement © 2015 PAUL and LINDA McCARTNEY and UNITED ARTISTS MUSIC LTD.  
All Rights for UNITED ARTISTS MUSIC LTD. Assigned to and Controlled by EMI UNART CATALOG INC.  
Exclusive Print Rights for EMI UNART CATALOG INC. Controlled and Administered by ALFRED MUSIC  
All Rights Reserved Used by Permission

# LIVE AND LET DIE

E♭ ALTO SAXOPHONE 1

Words and Music by  
PAUL McCARTNEY and LINDA McCARTNEY  
Arranged by PAUL MURTHA

**Pop Ballad** 9  $\%$  (♩ = ♩)

7 *mf* *f* 2

**16** **Faster** 3 *f*

**To Coda**  $\oplus$  24 4 *f*

**38** **Reggae** *Solo* *f* *fp* *End Solo*

**47** 3 *fp* *f*

**55** **Tempo 1, Pop Ballad** *mf* *mp*

**D.S. al Coda** *mf* *mf*

**Coda**  $\oplus$  *ff*

# LIVE AND LET DIE

E♭ ALTO SAXOPHONE 2

Words and Music by  
PAUL McCARTNEY and LINDA McCARTNEY  
Arranged by PAUL MURTHA

**Pop Ballad** 7 (J = J) 9 2

**16 Faster** 3

**To Coda** 24 4

**38 Reggae** 6

**47** 3

**55 Tempo I, Pop Ballad**

**D.S. al Coda**

**Coda**

# LIVE AND LET DIE

**B $\flat$  TENOR SAXOPHONE**

Words and Music by  
PAUL McCARTNEY and LINDA McCARTNEY  
*Arranged by PAUL MURTHA*

Pop Ballad

7

(♩ = ♩)

9

16 Faster

To Coda

24

4

31

38 Reggae

47

3

55 Tempo I, Pop Ballad

D.S. al Coda

Coda

60

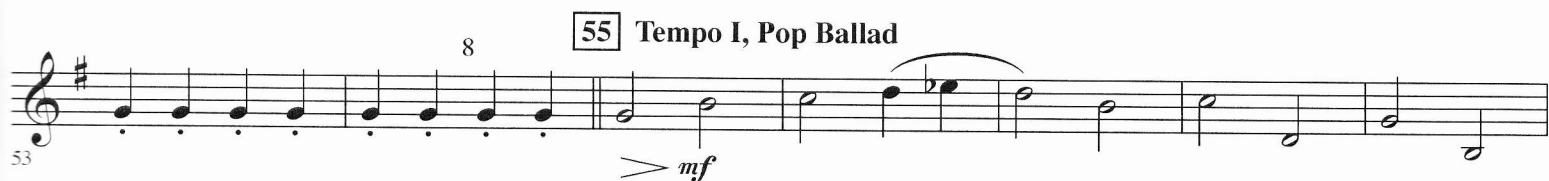
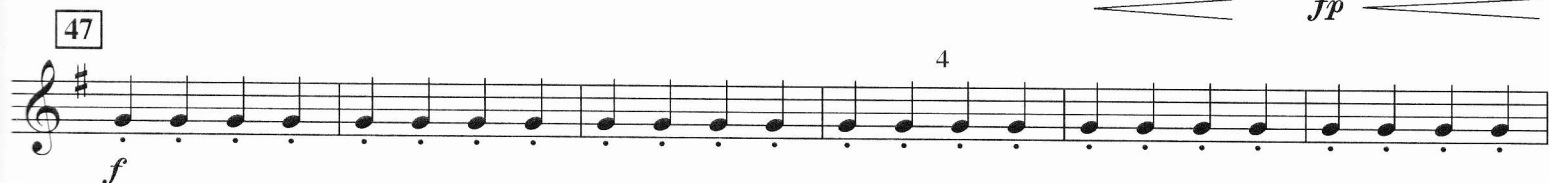
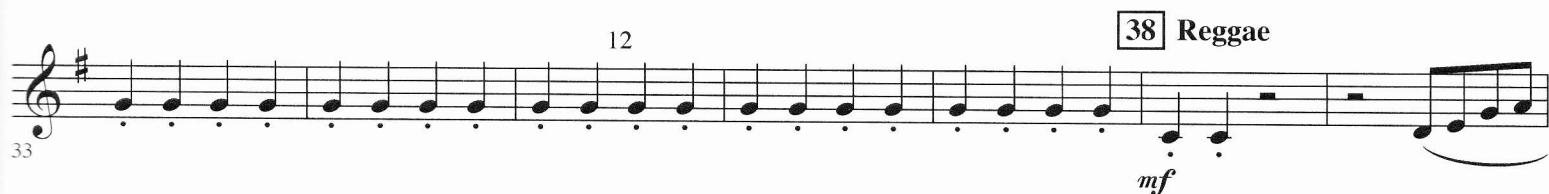
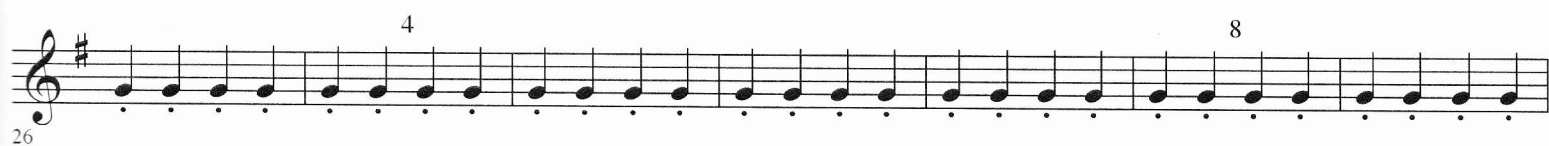
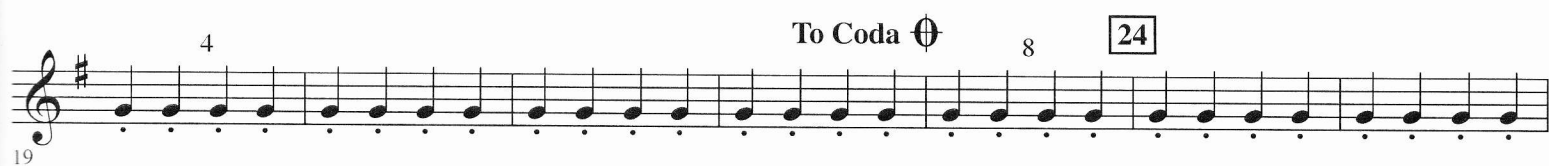
ff

# LIVE AND LET DIE

E $\flat$  BARITONE SAXOPHONE

Words and Music by  
PAUL McCARTNEY and LINDA McCARTNEY  
Arranged by PAUL MURTHA

## Pop Ballad





# LIVE AND LET DIE

B $\flat$  TRUMPET 1

Words and Music by  
PAUL McCARTNEY and LINDA McCARTNEY  
Arranged by PAUL MURTHA

**Pop Ballad** 3 St. Mute Ob. One player 2 All Open Play (♩ = ♩)

9 16 **Faster** 24 7

20 To Coda

31 **Reggae** 5

43 47

49

55 **Tempo I, Pop Ballad** 2 Solo

54

60 **D.S. al Coda** All **Coda**

*mp* *mf* *f* *fp* *ff*

# LIVE AND LET DIE

B $\flat$  TRUMPET 2

Words and Music by  
PAUL McCARTNEY and LINDA McCARTNEY  
Arranged by PAUL MURTHA

Pop Ballad

9

(J = J)



16 Faster



To Coda

24



38 Reggae

5



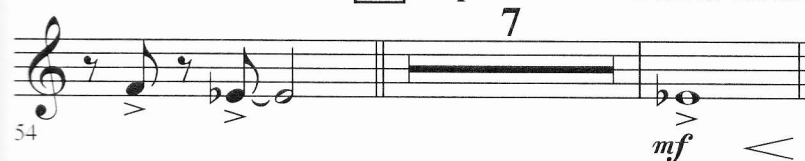
47



55 Tempo I,  
Pop Ballad

D.S. al Coda

7



Coda



# LIVE AND LET DIE

B $\flat$  TRUMPET 3

Words and Music by  
PAUL McCARTNEY and LINDA McCARTNEY  
Arranged by PAUL MURTHA

Pop Ballad

9

(♩ = ♩)



16 Faster



To Coda

24



38 Reggae

5



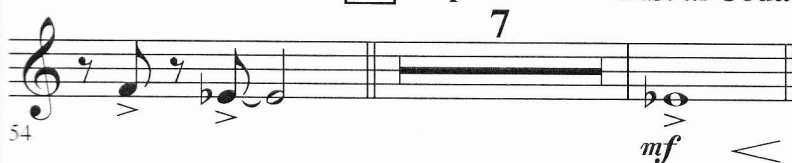
47



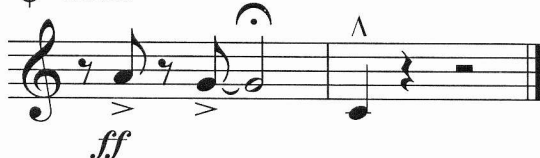
55 Tempo I,  
Pop Ballad

D.S. al Coda

7



Coda



# LIVE AND LET DIE

F HORN 1

Words and Music by  
PAUL McCARTNEY and LINDA McCARTNEY  
Arranged by PAUL MURTHA

**Pop Ballad** 7 9  $\frac{8}{8}$  (♩ = ♩)

*mf* *f*

**16** **Faster** *(f)*

**To Coda**  $\oplus$

**24** 4 *mp* *mf*

**38** **Reggae** *f* *fp* *mf*

**47** *fp* *f*

**55** **Tempo I, Pop Ballad** *mf* *mp*

**D.S. al Coda**

**Coda**  $\oplus$  *ff*

# LIVE AND LET DIE

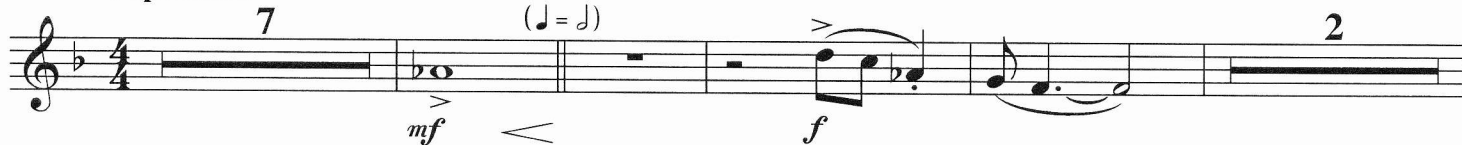
F HORN 2

Words and Music by  
PAUL McCARTNEY and LINDA McCARTNEY  
Arranged by PAUL MURTHA

Pop Ballad

9 %

(♩ = ♩)



16 Faster

(f)

To Coda ⊕

24

5

2

mf

38 Reggae

f

fp

mf

47

fp

f

55 Tempo I, Pop Ballad

mf

mp

D.S. al Coda

⊕ Coda

ff

© 1973 (Renewed) PAUL and LINDA McCARTNEY and UNITED ARTISTS MUSIC LTD.

This arrangement © 2015 PAUL and LINDA McCARTNEY and UNITED ARTISTS MUSIC LTD.

All Rights for UNITED ARTISTS MUSIC LTD. Assigned to and Controlled by EMI UNART CATALOG INC.

Exclusive Print Rights for EMI UNART CATALOG INC. Controlled and Administered by ALFRED MUSIC

All Rights Reserved Used by Permission



# LIVE AND LET DIE

ROMBONE 1

Words and Music by  
PAUL McCARTNEY and LINDA McCARTNEY  
Arranged by PAUL MURTHA

**9**  $\text{♩} = \text{♩}$   
**Pop Ballad**  
8 *f*

**16** **Faster** *sffz* *f* *sffz* **To Coda**  $\text{⌂}$

**24** 4 *f* *f*

**38** **Reggae** 6 *f* *fp* *mf*

**47** *fp* *sffz* *f*

**55** **Tempo I, Pop Ballad** 2 *sffz* *f* *mp*

**D.S. al Coda** 2 *mf*

**Coda**  $\text{⌂}$  *ff*

# LIVE AND LET DIE

TROMBONE 2

Words and Music by  
PAUL McCARTNEY and LINDA McCARTNEY  
Arranged by PAUL MURTHA

**Pop Ballad** 8 9  $\frac{3}{4}$  (♩ = ♩) *f*

**16** **Faster** *opt. 8vb* *sffz* *f* *opt. 8vb* *sffz* **To Coda**  $\Phi$

**24** 4 *f* *f*

**38** **Reggae** 6 *f* *fp* *mf*

**47** *fp* *sffz* *f*

**55** **Tempo I, Pop Ballad** 2 *sffz* *f* *mp*

**D.S. al Coda** 2 *mf*

**Coda**  $\Phi$  *ff*

# LIVE AND LET DIE

BARITONE B.C.

Words and Music by  
PAUL McCARTNEY and LINDA McCARTNEY  
Arranged by PAUL MURTHA

**Pop Ballad** 7 9  $\frac{3}{4}$  (♩ = ♩)

*mf* < *f*

**16** **Faster** 24 **To Coda**  $\Phi$

*sfz* *f* *sfz*

*f*

*mf* *f*

**38** **Reggae** 5

*f* *fp* *mf*

47

*fp* *sfz* *f*

**55** **Tempo I, Pop Ballad** 2

*sfz* *f* *mp*

**D.S. al Coda**  $\Phi$  **Coda**

*mf* *mf* *ff*

# LIVE AND LET DIE

BARITONE T.C.

Words and Music by  
PAUL McCARTNEY and LINDA McCARTNEY  
Arranged by PAUL MURTHA

**Pop Ballad**  
7

**9**  $\text{♩} = \text{♩}$

**16** **Faster**

**24**

**38** **Reggae**  
5

**47**

**55** **Tempo I, Pop Ballad**  
2

**D.S. al Coda**

**Coda**

Measures 7-15: Pop Ballad section, starting with a 4/4 time signature and a key signature of one flat. Dynamics include *mf*, *f*, and *sffz*. Measure 9 has a repeat sign and a tempo marking  $\text{♩} = \text{♩}$ . Measure 16 is marked 'Faster' and the time signature changes to 3/4. Measure 24 is marked with a box number 24. Measures 38-45: Reggae section, marked with a box number 38 and a 5-measure rest. Measure 47 is marked with a box number 47. Measures 55-60: Tempo I, Pop Ballad section, marked with a box number 55 and a 2-measure rest. Measure 60 is marked 'D.S. al Coda'. The Coda section follows, marked with a box number 60 and a key signature change to one sharp.

# LIVE AND LET DIE

TUBA

Words and Music by  
PAUL McCARTNEY and LINDA McCARTNEY  
Arranged by PAUL MURTHA

Pop Ballad 8 9  $\frac{3}{4}$  (♩ = ♩)

**f**

16 Faster 4 To Coda  $\Theta$

8 24 4

23 8 12

38 Reggae **mf**

37 **fp** **f** 47 4

44 **fp** **f**

8 55 Tempo I, Pop Ballad **mf**

52

D.S. al Coda

$\Theta$  Coda **ff**

60



# LIVE AND LET DIE

ELECTRIC BASS

Words and Music by  
PAUL McCARTNEY and LINDA McCARTNEY  
Arranged by PAUL MURTHA

Pop Ballad



9 %

16 Faster

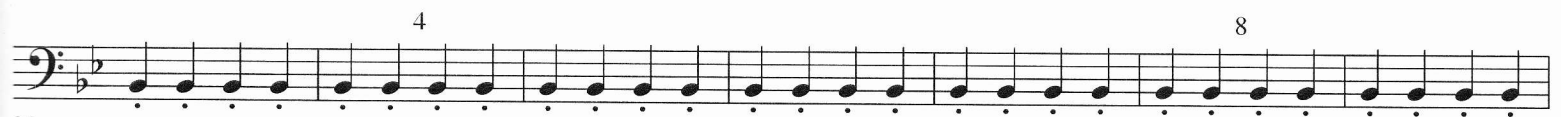


To Coda ⊕

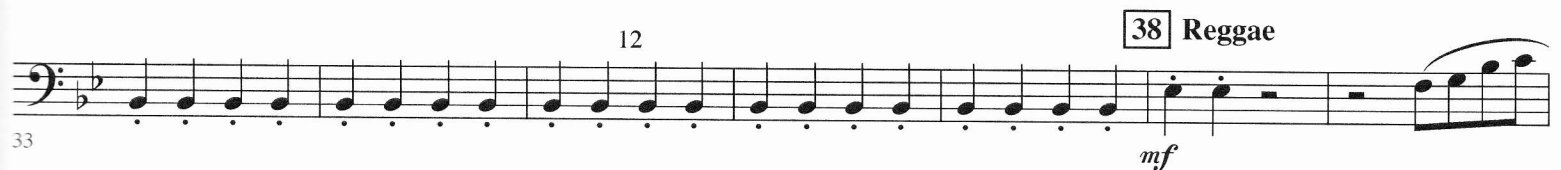
24



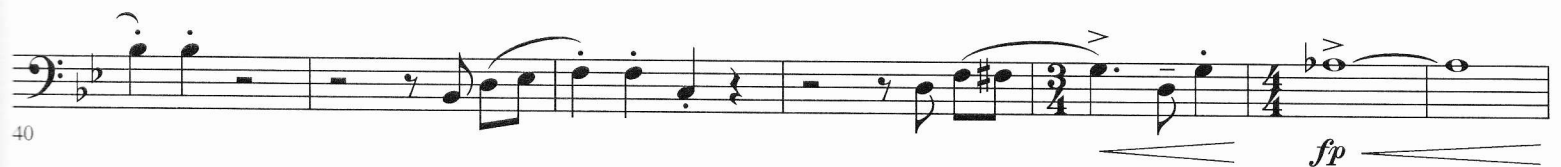
18



26



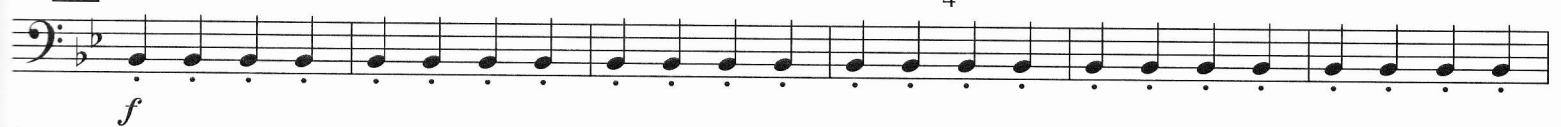
33



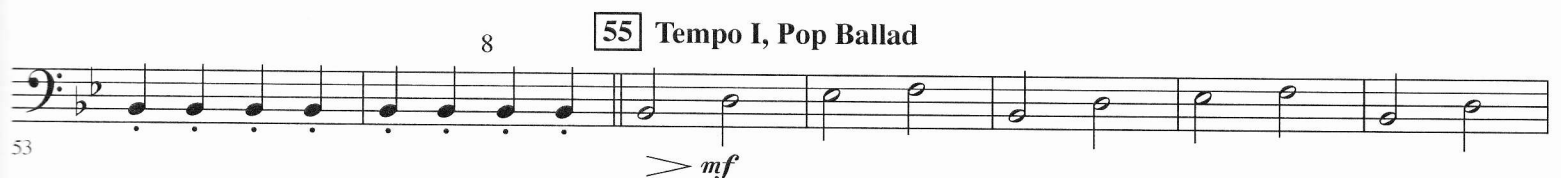
40

47

4



47



53

D.S. al Coda



60

⊕ Coda



# LIVE AND LET DIE

PERCUSSION 1  
Drum Set

Words and Music by  
PAUL McCARTNEY and LINDA McCARTNEY  
Arranged by PAUL MURTHA

**Pop Ballad**  
7

Ride Cym. Cr. Low Tom +S.D.  
*mf* B.D. *f*

9  $\frac{9}{8}$  (♩ = ♩)

16 **Faster**

To Coda  $\oplus$

24

25 Toms *fp*

31 *fp* *f* 4 *fp* **38 Reggae** + H.H.

39 4

47

55 **Tempo I, Pop Ballad**  
S.D. on Rim 4

53 *mf*

D.S. al Coda

$\oplus$  Coda

60

© 1973 (Renewed) PAUL and LINDA McCARTNEY and UNITED ARTISTS MUSIC LTD.

This arrangement © 2015 PAUL and LINDA McCARTNEY and UNITED ARTISTS MUSIC LTD.

All Rights for UNITED ARTISTS MUSIC LTD. Assigned to and Controlled by EMI UNART CATALOG INC.

Exclusive Print Rights for EMI UNART CATALOG INC. Controlled and Administered by ALFRED MUSIC

All Rights Reserved Used by Permission

04004133

Live and Let Die

# LIVE AND LET DIE

## PERCUSSION 2

Tambourine, Toms (3), Congas, Bell Tree

Words and Music by  
PAUL McCARTNEY and LINDA McCARTNEY  
Arranged by PAUL MURTHA

**Pop Ballad** 8 9  $\frac{9}{8}$  (♩ = ♩) 6 16 **Faster** Tambourine *f*

**To Coda**  $\oplus$

18

24 **Concert Toms** *f* *fp*

28 *f* *fp*

32 *f* *fp*

38 **Reggae** Congas 4 2 *mf*

47 **Tambourine** *f*

55 **Tempo I, Pop Ballad** 7 **D.S. al Coda** Bell Tree *mf*

**Coda**  $\oplus$

54

# LIVE AND LET DIE

**MALLET PERCUSSION**  
Bells, Xylophone, Chimes

Words and Music by  
**PAUL McCARTNEY and LINDA McCARTNEY**  
Arranged by **PAUL MURTHA**

**Pop Ballad** 5 Bells (J = J) 3 **9** %

**16** Faster Xylophone **f** **To Coda** ⊕

**24** 4 **f**

**32** Chimes **f** **ff**

**38** Reggae Xylo. **mf**

**47** 2 **f**

**55** Tempo I, Pop Ballad **D.S. al Coda** 7 Chimes **mf** **⊕ Coda**

© 1973 (Renewed) PAUL and LINDA McCARTNEY and UNITED ARTISTS MUSIC LTD.  
This arrangement © 2015 PAUL and LINDA McCARTNEY and UNITED ARTISTS MUSIC LTD.  
All Rights for UNITED ARTISTS MUSIC LTD. Assigned to and Controlled by EMI UNART CATALOG INC.  
Exclusive Print Rights for EMI UNART CATALOG INC. Controlled and Administered by ALFRED MUSIC  
All Rights Reserved Used by Permission

# LIVE AND LET DIE

## TIMPANI

Tam-Tam, Cr. Cym., Sus. Cym.

Words and Music by  
PAUL McCARTNEY and LINDA McCARTNEY

Arranged by PAUL MURTHA

Pop Ballad 9  $\text{♩} = \text{♩}$

8

16 Faster

To Coda  $\text{⌂}$  24 4 Tam-Tam 4

Cr. Cym. 38 Reggae 6

47 Timp. 2

55 Tempo I, Pop Ballad 3 Sus. Cym.

D.S. al Coda 3

$\text{⌂}$  Coda